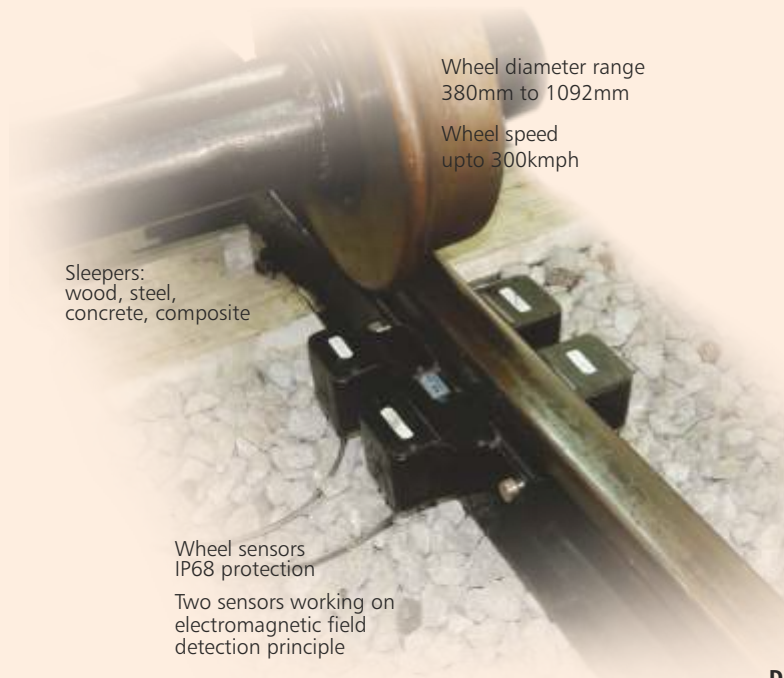


# Single and Multi Section Axle Counter

(CENELEC SIL4 safety standard)

Reliable wheel counting with fail-safe occupancy detection.

Medha's Single Section Axle Counter (SSDAC) and Multi Section Axle Counter (MSDAC) overcomes track circuit limitations in situations including - water logging or flooding, metal bridges, long block sections, yards with poor wheel shunt lines, high EMI/EMC environments, tunnels, high temperature and sunshine regions, complex and large stations and yards etc.



Wheel diameter range  
380mm to 1092mm

Wheel speed  
upto 300kmph

Sleepers:  
wood, steel,  
concrete, composite

Wheel sensors  
IP68 protection

Two sensors working on  
electromagnetic field  
detection principle



**Digital Axle Counter Unit**

Supports hot swapping of cards



**Digital Axle Counter Reset Box**

Wheel counter with 4x20 dot matrix display

## Single-section Axle Counter (SSDAC)

- 2oo2 architecture
- Hot stand-by communication over diverse media for higher availability

### Configurations (SSDAC)

- One detection point – Single section (1DP-1S): Typically used for sidings
- Two detection points – Single section (2DP-1S): Straight line sections
- Three detection points – Single section (3DP-1S): Point zones.
- Three detection points – Two consecutive sections or Auto-Section in a straight line (3DP-2S/AS)

## Multi-section Axle Counter (MSDAC)

- 2oo3 architecture
- Can evaluate upto 40 detection points and monitor upto 39 sections
- Can cater to bigger stations or marshalling yards with cascading feature

### Configurations (MSDAC)

All configurations of SSDAC are covered in addition to below

- Multiple detection points - Single section: Ladder
- Consecutive single sections in a straight line segment and various other situations
- Complex yard/station can be configured by user friendly GUI Yard Configuration Tool

- ✓ Cost effective
- ✓ Zero maintenance system
- ✓ Suitable for different types of Rail profiles
- ✓ Standalone systems, not dependent on type and make of Interlocking
- ✓ Suitable for main line, metro and high speed applications
- ✓ Web-mounted sensors for reliable operation
- ✓ Easy to install without needing any additional equipment

### Compliance to International Standards

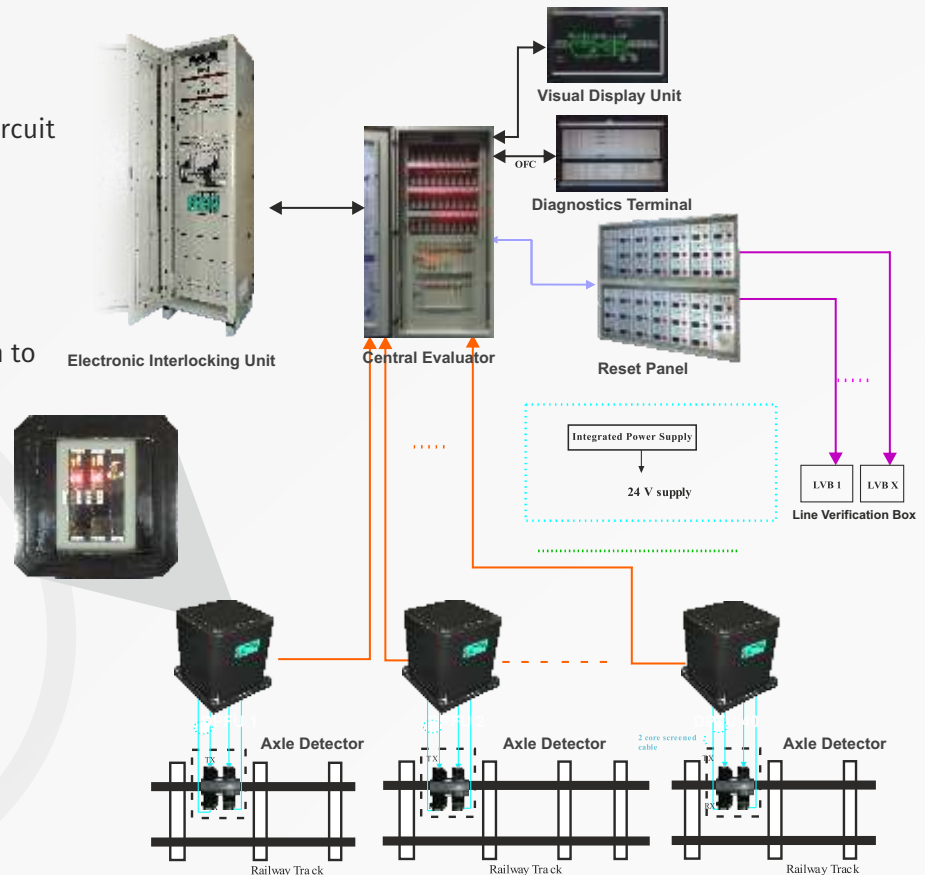
EN 50121, EN 50126, EN 50128, EN 50129, EN 50159

### Installation

- Replacement of existing track circuit with digital axle counters
- During station upgradation
- Construction of new stations
- Track length expansion
- Addition of new lines
- Upgradation of signaling system to computer based system

### Supply package Includes

- Wheel sensors
- Field units
- Central Evaluator
- Reset panel, VDU, DT and interconnecting cables



[www.medha.com](http://www.medha.com)

**MEDHA SERVO DRIVES PVT. LTD.**